

# MESIROW FINANCIAL

## Chicago, IL

---

### Size

348,000 square feet

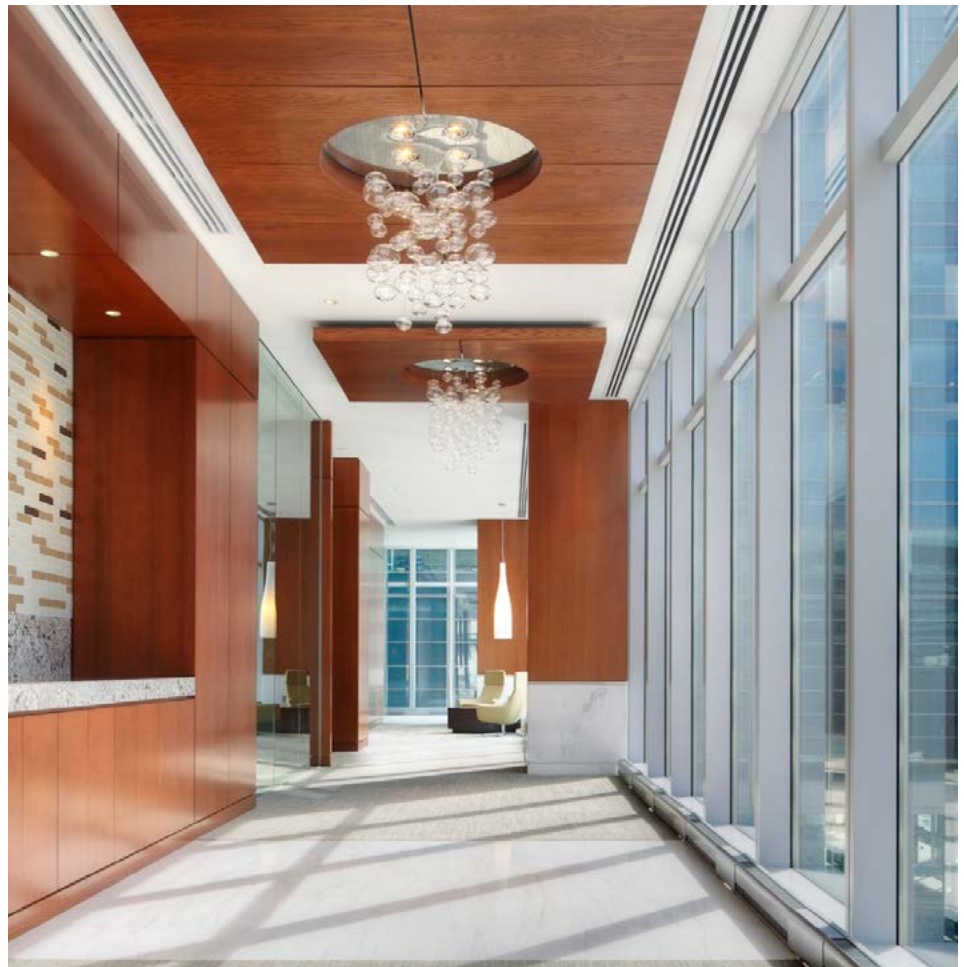
### Project Highlights

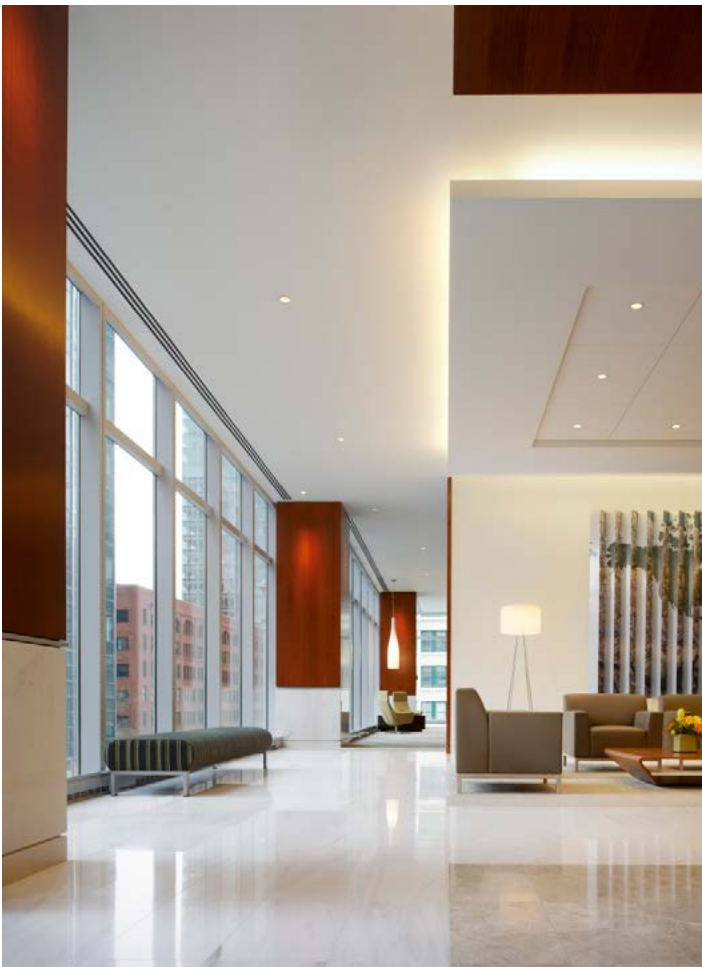
Relocation and consolidation of multiple locations into centralized 12-floor headquarters; Flexible planning grid maximizes flexibility for growth; Full floor conference center; Daylight harvesting sensors; Design embraces company's history and entrepreneurial spirit; LEED, Gold Certified

### Services Provided

Workplace design strategies; Full service interior design and architecture; Furniture assessment, selection and strategic procurement; LEED administration

---





The CEO of Chicago-based Mesirow Financial defined the vision for the project as one that must honor the company's 73-year history, but support the future while embracing the entrepreneurial foundation of the organization.

Leveraging the brand while acknowledging that the business is as much about individual clients as it is about teaming, the concept developed into a solution that provided privacy and flexibility. The facility is 90% modular, and churn costs were reduced by the use of "flexible planning grid" that invested in infrastructure above the ceiling to allow for maximum flexibility in future reconfigurations.

Features of the LEED Gold headquarters include a light color palette, occupancy sensors and energy efficient light fixtures with re-addressable digital ballasts for comprehensive daylight-harvesting. In addition, Green Glance software manages energy consumption on a floor-by-floor basis.

All this was achieved in a design vernacular that embodied Mesirow Financial's culture, stability and history.