

CALIFORNIA INSTITUTE OF TECHNOLOGY

Pasadena, CA

Size

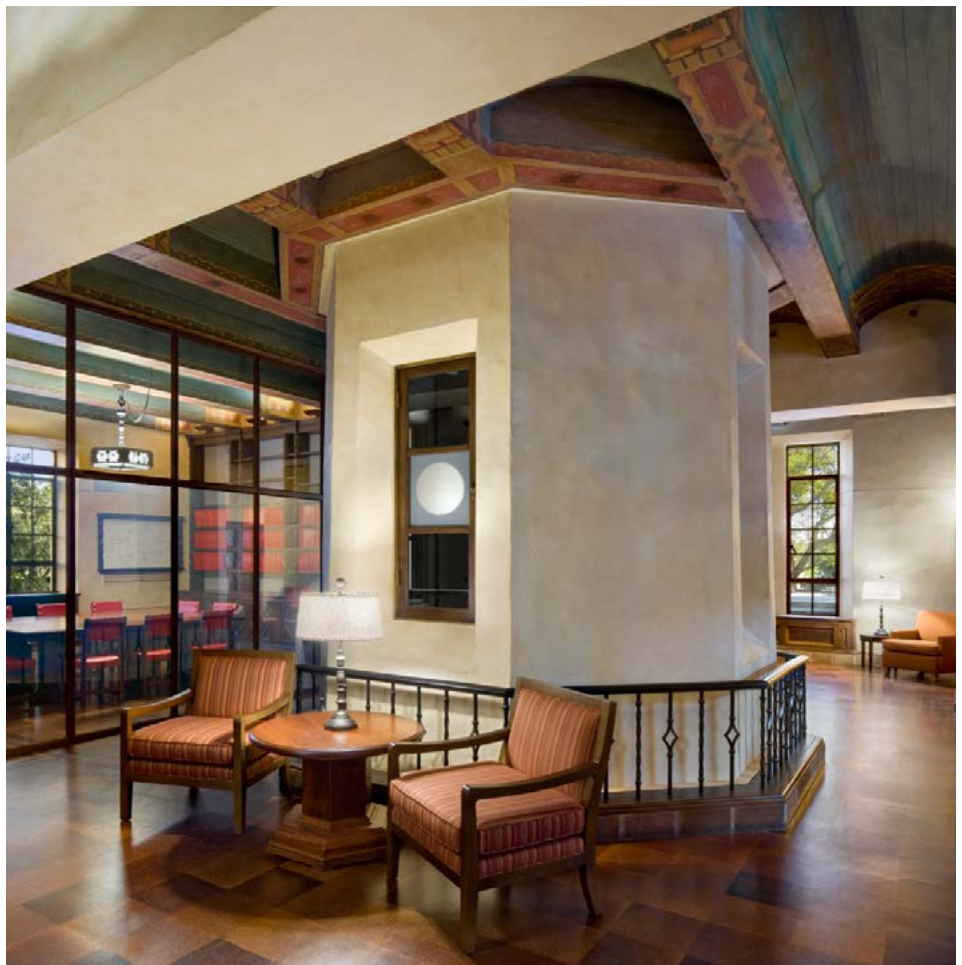
37,000 square feet

Project Highlights

Seismic retrofit and historic restoration and renovation; New laboratories, modern classrooms, faculty offices, lounge and meeting areas; Transformation of solar telescope into energy-efficient cooling and daylighting delivery system

Services Provided

Full service interior design and architecture





IA was the interior design and FF&E consultant on the design team led by Architectural Resources Group for the adaptive re-use and rehabilitation of the Robinson Astrophysics Lab, a historically significant building built in 1932 to house the Palomar telescope and massive five story solar telescope (ceolostate) at California Institute of Technology's campus in Pasadena.

The project involved seismic retrofit, historic restoration and preservation of the building's exterior and selected interior architectural elements, and major infrastructure improvements, including the transformation of the solar telescope into an energy-efficient cooling and daylighting delivery system. Additionally, the restoration included transforming three basement floors into new laboratories, a build out of the upper levels into faculty and student offices, and the addition of modern classrooms, lounge areas, and meeting areas with new audiovisual and technology.

The building is not only one of the nation's most energy efficient science buildings, but also the first laboratory in a historic building to receive a rating of LEED Platinum in the nation.