

CONFIDENTIAL FINANCIAL FIRM

Denver, CO
Headquarters
Relocation

Size

18,000 square feet

Project Highlights

Planned to take advantage of 360 degree views of Denver and the Rocky Mountains

Art gallery and event space in reception area

Private CEO suite

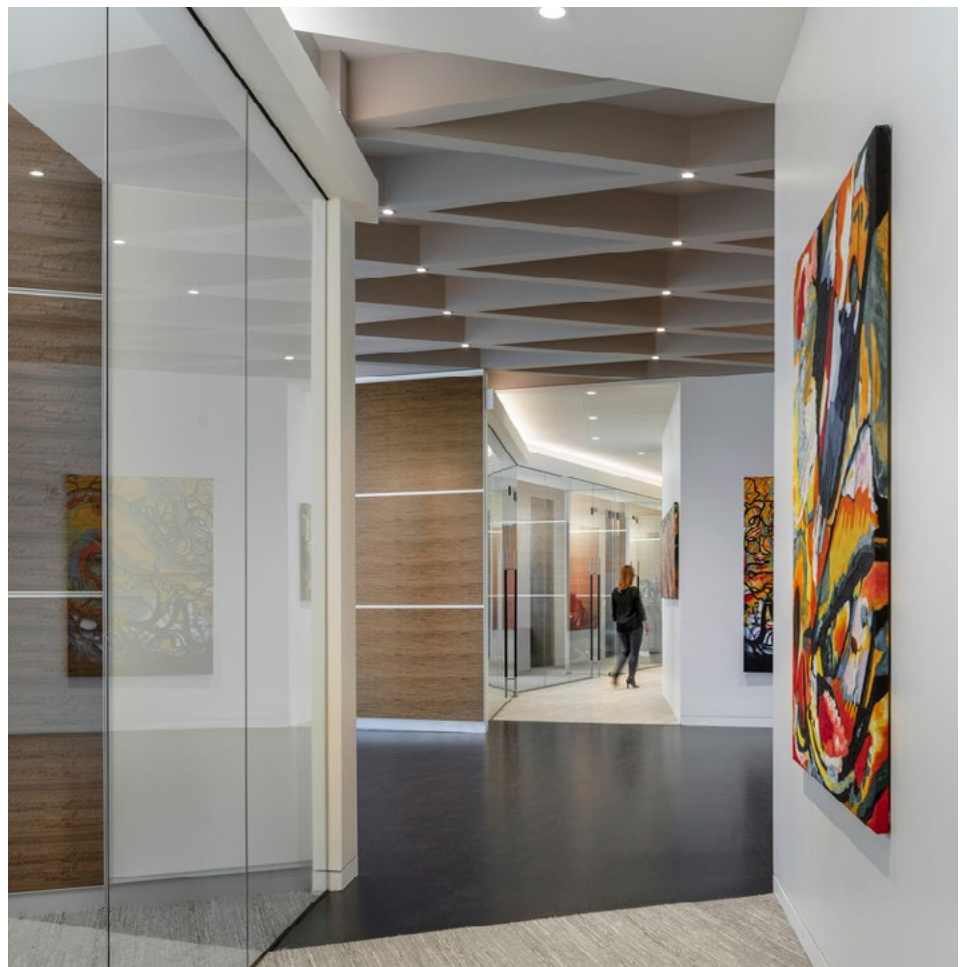
Two-story trading floor with large video wall

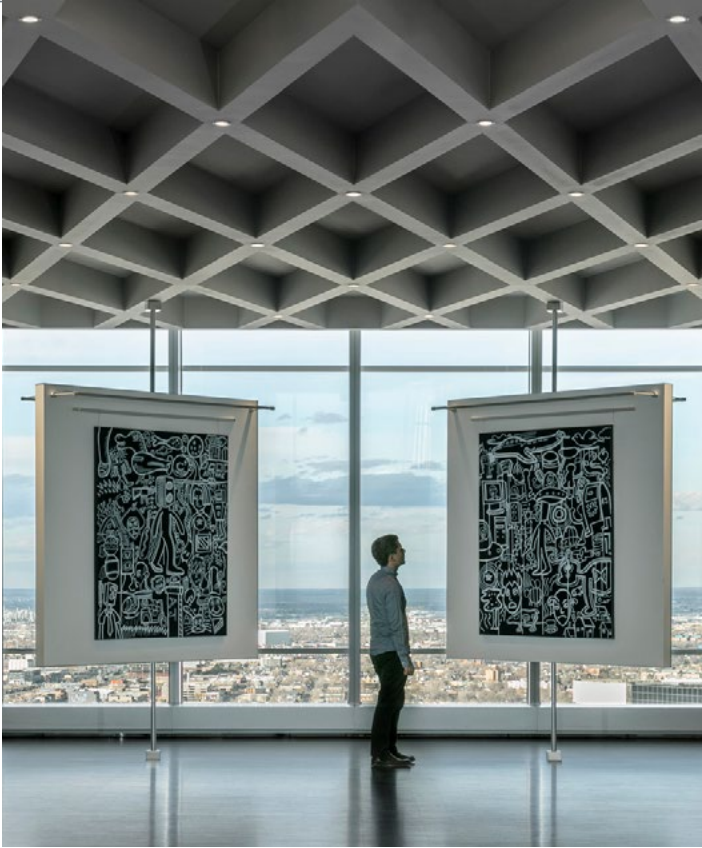
Gourmet catering kitchen

High-end hospitality finishes and unique detailing

Services Provided

Full service interior architecture and design; Lighting design





This confidential financial firm partnered with IA to design a best-in-class office space on the top floor of Denver's newest high-rise building. The design of the space is modern and clean, with floor-to-ceiling, 12'-24' windows that showcase sweeping mountain and city views. The space has many unique design components that work in harmony with the complex geometry of the top of the building.



To highlight the client's extensive art collection, two dedicated art galleries showcase custom rotating art walls to display curated works provided by local artists. This feature was combined with the reception area to provide guests with a place to tour while enjoying 360 degree views of Denver and the Rocky Mountains.

The trading floor is a hidden gem within the space that expands to a two-story volume complete with a large scale, stretched fabric ceiling backed by LED lighting capable of mimicking natural daylight throughout all seasons. To keep traders connected to worldwide markets and developing news, this area features a 360 square-foot video wall that can play content from up to four sources at a time.



The CEO suite comprises the northeast corner of the floor and features a residential-inspired office with an informal seating area and meeting space. The top floor of the building features two outdoor terraces for year-round enjoyment of the amazing views and weather.

This dynamic, light-filled, artistic workspace is a testament to the client's vision and reflects its unique culture and commitment to Denver.